



Pragmatix Trade Router

Version 1.3 Release Notes

6 March 2008

Introduction

This document describes the changes and improvements in the Pragmatix Trade Router software with respect to the previous version, 1.2. The Trade Router version number is shown in the application's startup screen. Alternatively, you can see the version number in the Help/About window.

New Features

New Stop order type in entry/exit Strategy

The *Stop* order type is now supported in the entry/exit Strategy of any Trade Engine. In previous versions, only Limit and Market orders were available. As typically, stop prices are on the 'other' side of the current price than limit order prices, the offset is calculated the other way around. For example, if an offset of 0.4 point is used in Phase 1, together with a limit order, then with a current price of 143.0, a buy limit order of 142.6 will be used. With a buy stop order however, the order price used will be 143.4. Stop, limit and market orders can be used together in one strategy.

Negative distances allowed in entry/exit Strategy

Negative distances are now allowed in the entry/exit Strategy of any Trade Engine. For example, if an offset of -0.1 point is used in Phase 1, together with a limit order, then with a current price of 143.0, a buy limit order of 143.1 will be used. Of course, there is a good chance that such order is filled immediately.

Negative Minimal Gain allowed for Trailing Stop

A Trailing Stop can now be defined with a negative Minimal Gain. Trailing can then begin much sooner, but as the stop starts being active below the break-even point (minimal gain=0), the stop can be hit whilst the position is still at a loss. A Trailing Stop starting below break-even is also known as a Trailing Stop-Loss.

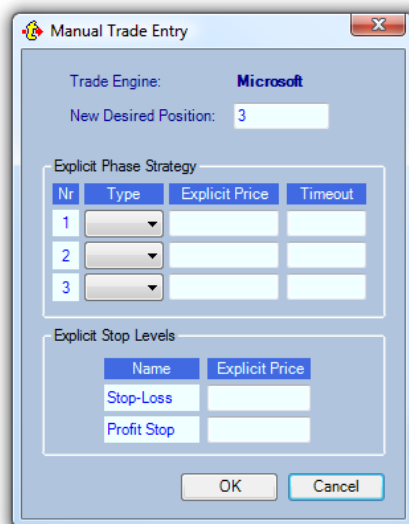
New Manual Trade Entry dialog

In previous versions, double-clicking a Trade Engine (or right-clicking, *Manual Trade Entry*) would bring up a simple dialog in which the new Desired Position could be entered manually.

From version 1.3, a new window is used, depicted below.



Clicking the 'Options' button will reveal additional options. These options allow you to deviate from the defined strategy. For each phase of the entry/exit Strategy, you can define an alternative order type (Market, Stop or Limit), an explicit price for that phase, and/or an alternative timeout value. If you leave a field empty, the default value will be used, as defined in the Strategy.



You can also define explicit stop-loss and profit stop levels, to be used once a position is obtained.

This window can also be used to adjust stops in an already open position. Specify a Desired Position equal to the current Desired Position, and specify different stop-loss or profit stop values. The stops will be adjusted instantly.

Better protection against multiple Trade Router instances

If you configure, in menu Configuration/Settings, that only one instance of the Trade Router is allowed to run at any one time, an error will be displayed when another Trade Router is started simultaneously. Previously, only a warning was shown, still allowing multiple copies to run.

Improved 'Edit Engine Settings' dialog handling

In various fields of this window, shown below, fractional numbers can be entered. Depending on the local computer settings, these numbers should be entered with a decimal period or

comma. Using the wrong separator would lead to huge, incorrect values (like 1575 instead of 15.75). Extra logic has been added so that either commas or periods can be used.

The screenshot shows the 'Edit engine settings' dialog box with the 'Engine Settings' tab selected. The dialog is divided into two main sections: 'Phase Strategy' and 'Automatic Stops'.

Phase Strategy

Nr	Type	Distance	Timeout
1	Limit	1,5 pts	3
2	Market		
3			

Automatic Stops

Name	Type	Distance	Min. gain	Step size
Stop-Loss	Stop	1 pts		
Profit Stop	Limit	1 pts		
Trailing Stop				

Default Time-in-Force: Day

When receiving a new Desired Position equal to the previous Desired Position, ignore the command, even if the actual position is different from that position

Make these changes permanent, by saving them in the system configuration

OK Cancel